

TOTAL HOME RETAIL INNOVATION & INSPIRATION

HFN

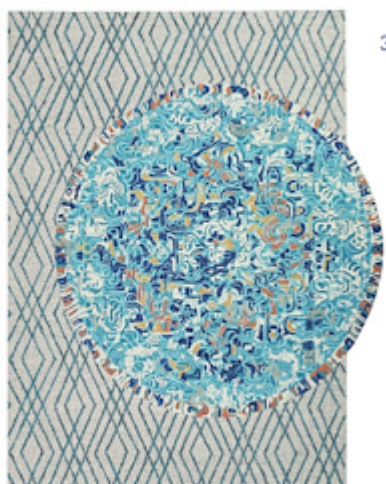
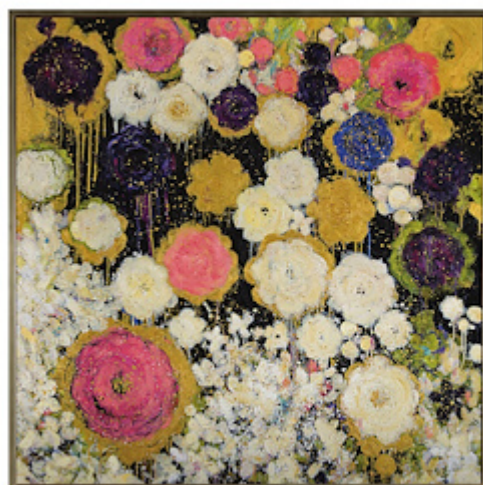
April 2019

The Pop-up Story Continues

REPORT FROM <
SHOPTALK
PAGE 12

TABLETOP, <
HIGH POINT
PREVIEWS
PAGES 24, 40





- 1 Combining modern engineering with classic sensibility, the Margo collection from **BDI** boasts striking lines available in two wood finishes and three door color options.
- 2 English Garden by **RFA Decor**, an original painting by artist Lenore Gimpert, is handembellished on canvas.
- 3 Pairing two unique shapes, **Company C**'s Duet rug offers a layered look using a cut-and-loop pile, abstract medallions and geometric lattice designs in coastal colors and neutral accents.
- 4 Wood case and doors with handforged iron handles sit between a caststone top and base in the Avalon buffet from **Robert James Collection**.
- 5 The SoCal Living by Jennifer Adams collection from **Orian Rugs** features visual dimension in modern neutrals, the Mandala Silverton design shown here.
- 6 The Vance swivel chair from **Taylor King** is drenched in luminous watercolor fabric, adding gorgeous contrast against its handsome exposed wood frame.

