

MARGO™

BDI



MARGO Combining modern engineering with a classic sensibility, Margo's striking aesthetic and distinctive lines invite attention. This multifunction storage piece can be home to a media system or can be positioned under a wall mounted TV. Available in two finishes with three door options.

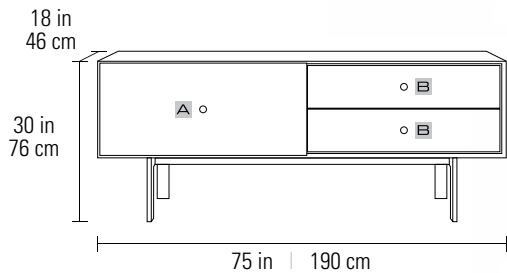
MARGO™

DESIGN JEFF BARE

- A multi-use design suitable as a media system or general storage
- The soft-closing sliding door reveals storage drawers or adjustable shelving
- Wire management channels allow for use with a TV and compact system

5229 CABINET

Recommended TV Size	up to 82"
Arena TV Mount Compatibility	N/A
Dimensions	30H x 75 x 18 in 76H x 190 x 46 cm
Component Capacity	4-6
Top Shelf Capacity	150 lbs 68 kg
Weight	167.5 lbs 76 kg
Door Weight	6.5 lbs 3 kg



A Side Compartment

Dimensions	16.75H x 36.25 x 16 in 42.9H x 92.1 x 40.9 cm
Number of Adjustable Shelves	3 positions; 1.25 in 32 mm
Shelf Capacity	75 lbs 34 kg
Bottom Compartment Capacity	100 lbs 45 kg

B Drawer(s) Compartment

Dimensions	5.25H x 34 x 12 in 13.5H x 86.5 x 30.8 cm
Number of Adjustable Shelves	2
Drawer Capacity	50 lbs 23 kg

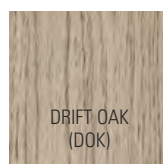


Margo's sliding door opens to reveal adjustable shelving for AV components and a compact speaker.

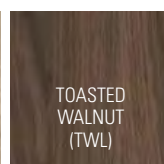
FEATURES

- Adjustable Shelves
- Flow-Through Ventilation
- Hidden Levelers
- Integrated Cable Management
- TV Safety Strap

CABINET

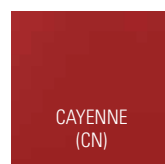


DRIFT OAK
(DOK)

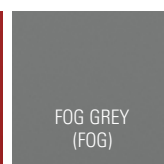


TOASTED
WALNUT
(TWL)

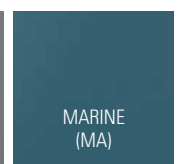
DOOR



CAYENNE
(CN)



FOG GREY
(FOG)



MARINE
(MA)